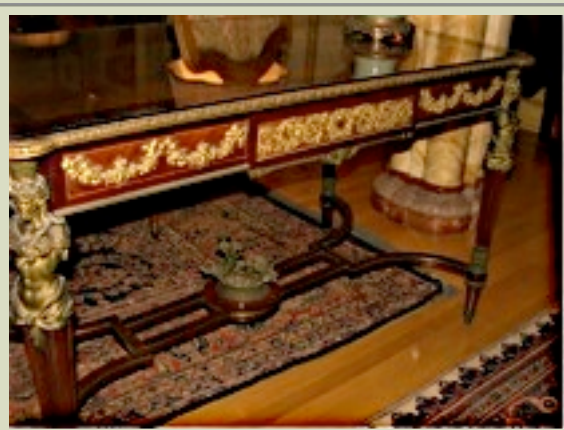


TWO 19TH-CENTURY FRENCH WRITING DESKS IN THE GREAT HALL



LOUIS XVI-STYLE BUREAU PLAT with GILDED MOUNTS AND CARYATIDS

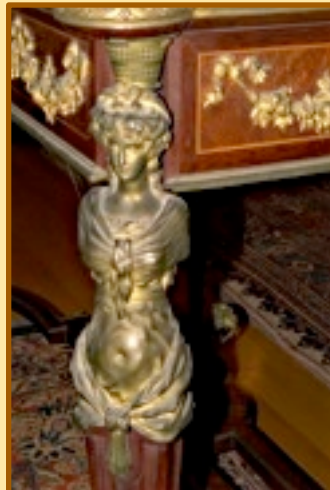
A masterpiece of walnut and fruitwood marquetry embellished with gilt metal mounts of stylized floral swags and acanthus. The legs are mounted with caryatids – males crowned with grape leaves and females with upswept coiffure. Restoration needs: repair cracks and veneer losses as well as full restoration of metal mounts.



ROCOCO-REVIVAL BUREAU PLAT

Constructed of mahogany and gilt metal, this graceful desk features floral marquetry framed by a carved wood border above an undulating, serpentine apron with gilt metal acanthus mounts extending down the legs. Restoration needs: repair cracks and veneer losses as well as full restoration of the metal mounts.

ADOPT-A-TREASURE GIFTS



\$40,000 – Louis XVI-style Bureau Plat with porcelain plaques by Louis-François Bellangé (Great Hall)

\$30,000 – Régence-style Writing Table with *Bouille* Marquetry (Reception Room)

\$26,000 – Régence-style Ladies' Secretary with *Bouille* Marquetry (Reception Room)

\$25,000 – Louis XVI-style Bureau Plat with gilded mounts and caryatids (Great Hall)

\$24,000 – Rococo Revival Bureau Plat (Great Hall)

\$12,000 – Louis XV-style China Cabinet (Reception Room)

\$10,000 – Pictorial Porcelain-Mounted Table (Library)

Donors will be acknowledged in all future Doheny Mansion publications as well as on a commemorative plaque to be installed on Chester Place, and receive Friends benefits at the level of their gift.



For further information, please contact
Sharon Keely
Tel. 213-477.2740
skeely@msmc.la.edu



DOHENY MANSION CONSERVATION

ADOPT A TREASURE

Lend your own personal touch – and your name – to the elegance of the Doheny Mansion by sponsoring the restoration of one of these unique period pieces.



LOUIS XVI-STYLE BUREAU PLAT with PORCELAIN PLAQUES

One of the mansion's chief treasures, this elegant French writing table was stamped ca. 1820-23 by the cabinet maker Louis-François Bellangé, the younger brother of the famous *ébéniste* Pierre-Antoine Bellangé (whose clients included President James Monroe). Louis-François supplied furniture for Napoleon I (as did his brother) and for wealthy (often aristocratic) British francophiles. Opulently decorated with gilt metal mounts and porcelain plaques, this desk is a rare example of surviving pieces of this type by Louis-François Bellangé. Restoration needs: shore up its structure and repair the mechanism of its spring-loaded side panels; restore damaged plaques, embossed-leather writing surfaces, and tarnished mounts.



PICTORIAL PORCELAIN-MOUNTED TABLE

Signed by F. Dorfl and built in Vienna in the last half of the 19th century, this table appears in the Doheny Mansion's earliest photographs and thus more than likely belonged to Sara Posey, the mansion's first owner. An elaborately carved gilt wood frame supports a porcelain plaque depicting Columbus proposing his voyage to Ferdinand, Isabella and their court. Restoration needs: the frame is severely damaged.



*LOUIS XV-STYLE
PAINTED CHINA CABINET*

Gilt metal mounts, *Vernis Martin*-style gold lacquer, and Watteau-esque paintings of musicians and romantic landscapes decorate this elegant cabinet.

Restoration needs: repair multiple losses to the lacquered surface and tarnished metal mounts, and reverse the mistaken earlier attempts at restoration.

TWO RÉGENCE-STYLE PIECES WITH "BOULLE" MARQUETRY

The two 19th-century pieces in the panel to the right — both dating from the period of Napoleon III — employ the *Bouille* technique of marquetry.

A favorite of Louis XIV, André Charles Bouille (1642-1732) and his family of French cabinet makers perfected the technique, which consisted of sawing through several glued-together layers of different materials, then creating designs from the resulting figures and matrices. In addition to a brass ground and ebonized wood, Bouille usually added tortoise shell, zinc, ivory and mother of pearl.



An unusual example of 19th-century Bouille technique

As seen in the photograph above, the top of the writing table pictured at the lower right features an elaborate design on a foundation of ebonized wood and gilt bronze inlaid with exotic materials — tortoise shell, bone, mother of pearl, colored woods, brass and pewter. At the center, a musician plays the recorder beneath a fanciful canopy supported by caryatids and surrounded by griffins, *putti*, masks, stylized arabesques and foliage.

The secretary at the upper right employs a similar if simpler *Bouille* technique, with marquetry of tortoise shell and brass inlaid over ebonized wood and gilt bronze.

Another early inhabitant of the Doheny Mansion, this piece originally belonged to Mrs. Posey, who sold the mansion fully-furnished to the Dohenys. At one point, Estelle placed the secretary next to a Regina Music Box on the landing beneath the great staircase.

Restoration needs: in poor condition with much loss of veneer and unprofessional attempts at repair (including solder and cellophane tape).



*RÉGENCE-STYLE
LADIES' SECRETARY*

RÉGENCE-STYLE WRITING TABLE

In historic photographs, this exquisite piece appears in various rooms — the Great Hall, Library and, now, the Reception Room. Restoration needs: multiple losses to the inlaid surface, a "frozen" drawer and tarnished mounts.

